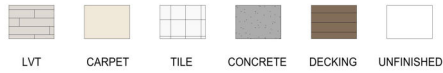
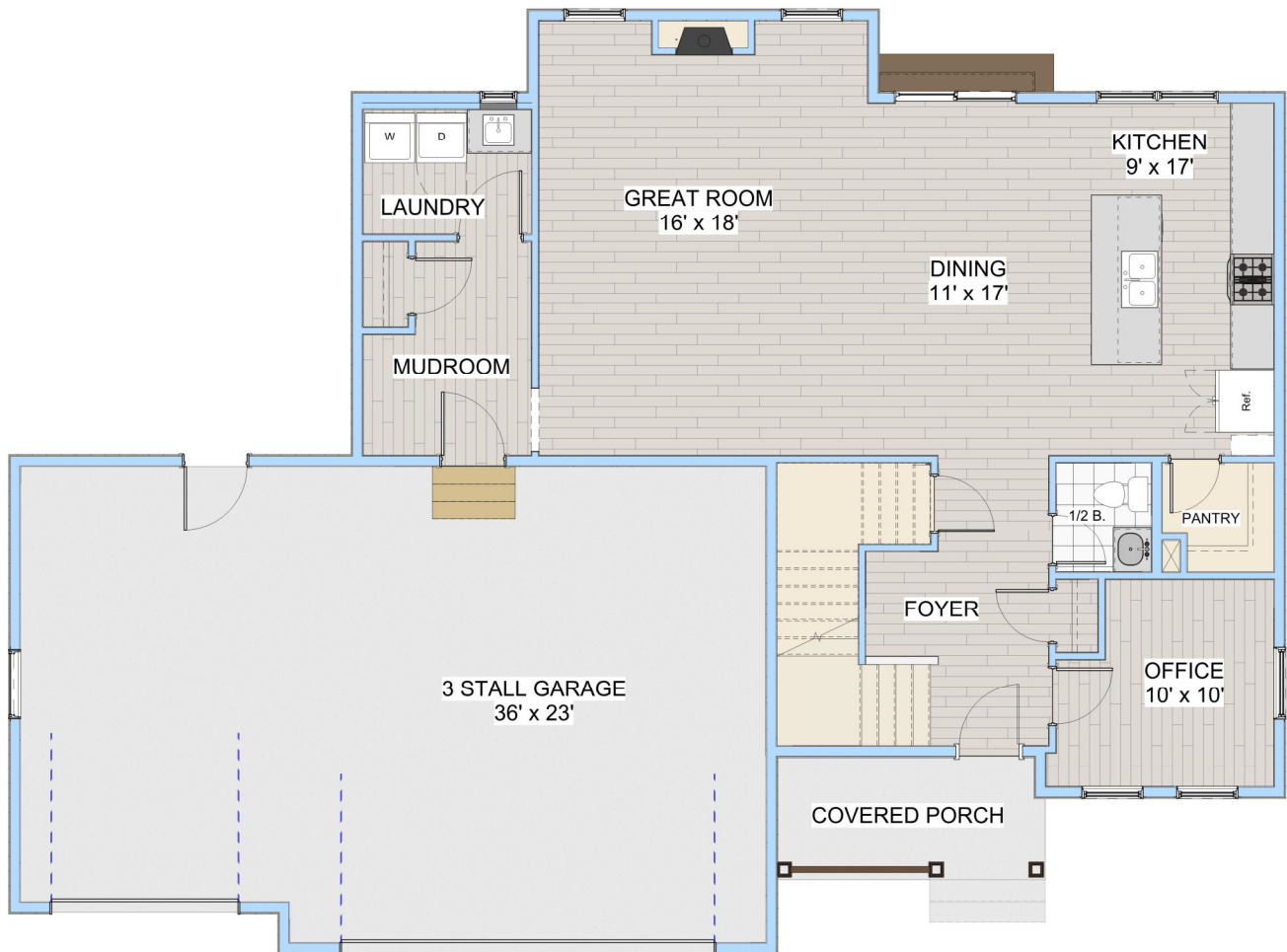


# BEATRICE BASEMENT PLAN (3 STALL)



PLAN DETAILS	
<b>Total</b>	<b>3736 sf</b>
1 <sup>st</sup> Floor	1256 sf
2 <sup>ND</sup> Floor	1224 sf
Basement	1256 sf
Front Porch	77 sf
Garage	849 sf
Total Bedrooms	4
Total Bathrooms	3.5
Width	61' 6"
Depth	41' 6"



## MAIN FLOOR LAYOUT