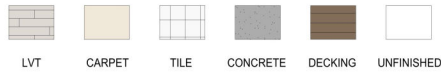
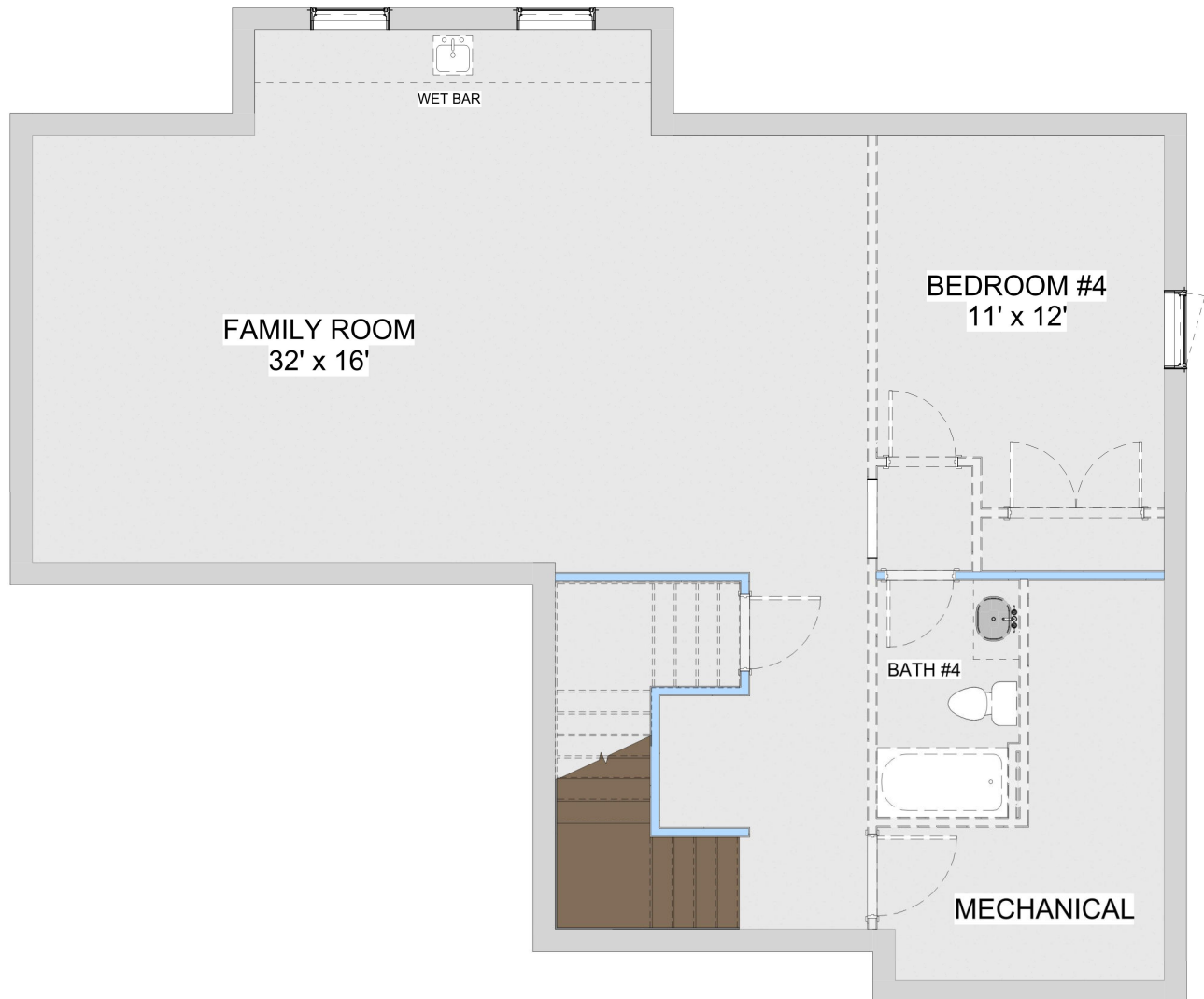


BEATRICE BASEMENT PLAN



PLAN DETAILS	
Total	3736 sf
1 st Floor	1256 sf
2 ND Floor	1224 sf
Basement	1256 sf
Front Porch	77 sf
Garage	849 sf
Total Bedrooms	4
Total Bathrooms	3.5
Width	61' 6"
Depth	41' 6"



UNFINISHED BASEMENT LAYOUT

Pricing, specifications and terms may not be current and are subject to change without notice, Renderings are for illustrative purposes only and may show features/options not included in the price or available for an extra cost. Plan square footages and room dimensions may vary according to the elevation and plan selected. Contact R Henry Construction, Inc for more information.