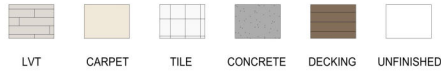
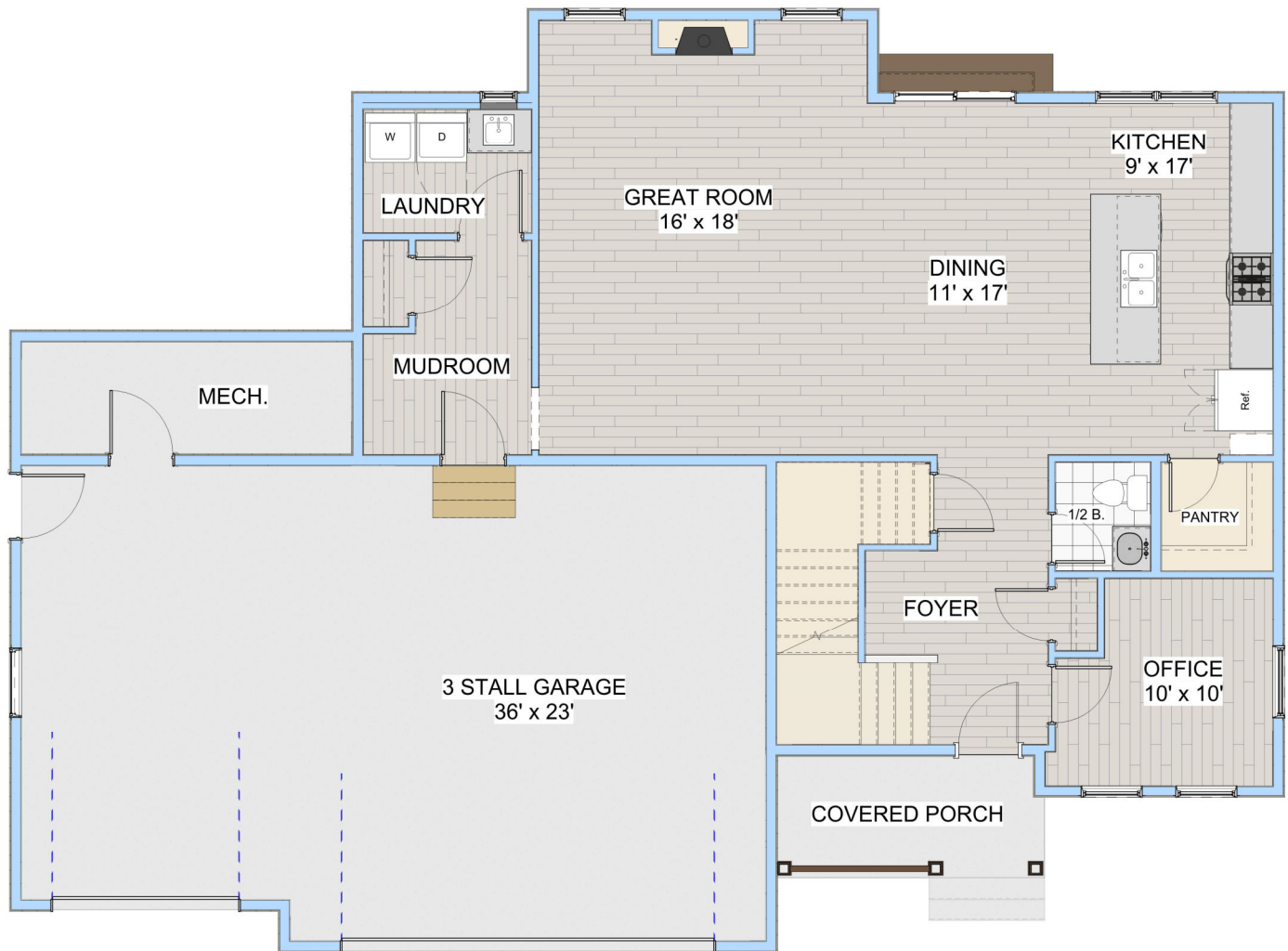


BEATRICE PATIO PLAN (3 STALL)



PLAN DETAILS	
Total SF	2541 sf
Heated SF	2541 sf
1 st Floor	1256 sf
Mechanical Room	61 sf
2 ND Floor	1224 sf
Front Porch	77 sf
Garage	849 sf
Bedrooms	3
Bathrooms	2.5
Width	61' 6"
Depth	41' 6"



MAIN FLOOR LAYOUT