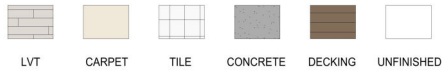
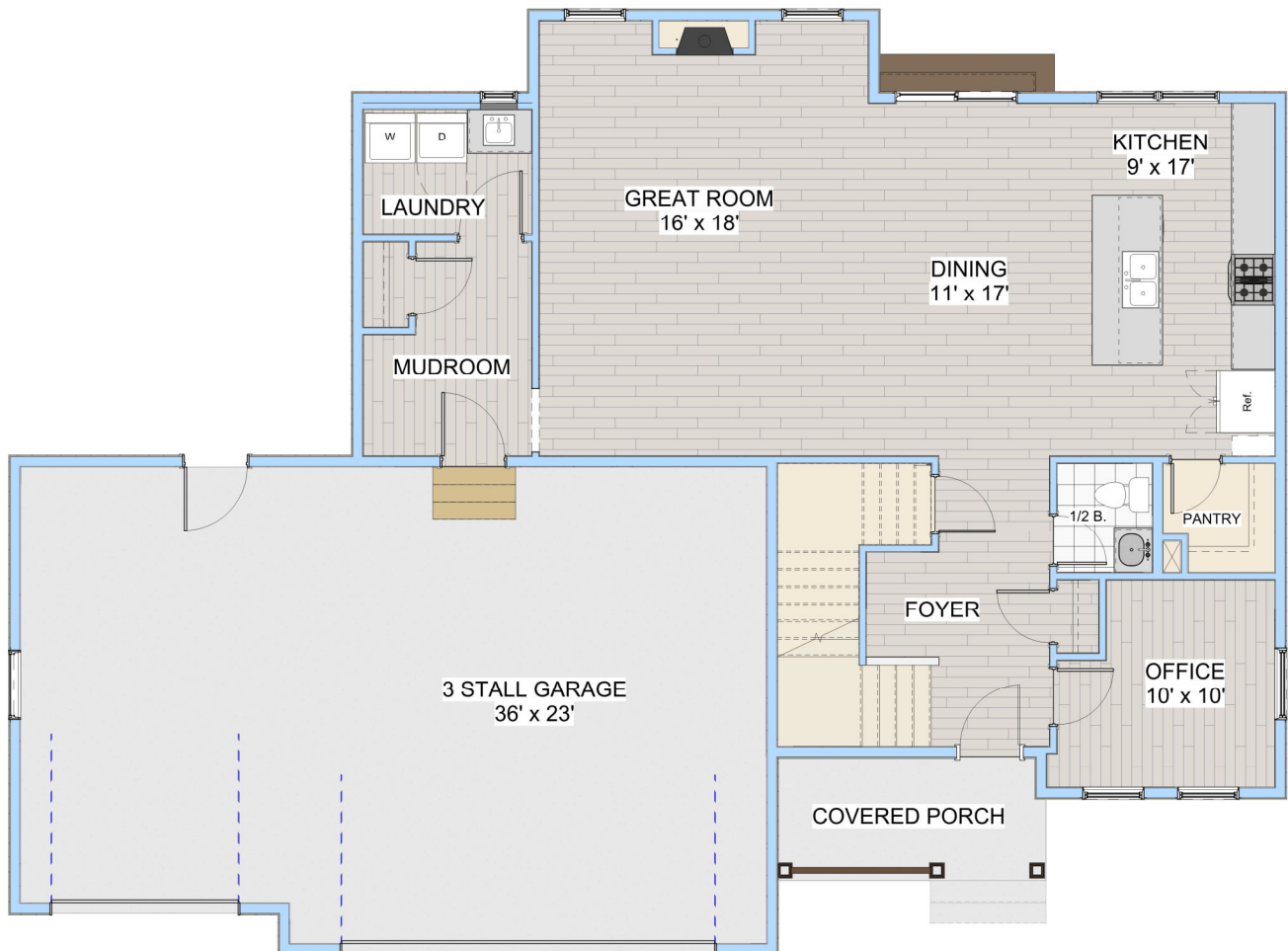


BEATRICE BASEMENT PLAN (3 STALL)



PLAN DETAILS

| | |
|--------------------------|----------------|
| Total living area | 3736 sf |
| 1 st Floor | 1256 sf |
| 2 ND Floor | 1224 sf |
| Basement | 1256 sf |
| Front Porch | 77 sf |
| Garage | 849 sf |
| Bedrooms | 3+ |
| Bathrooms | 2.5 |
| Width | 61' 6" |
| Depth | 41' 6" |



MAIN FLOOR LAYOUT