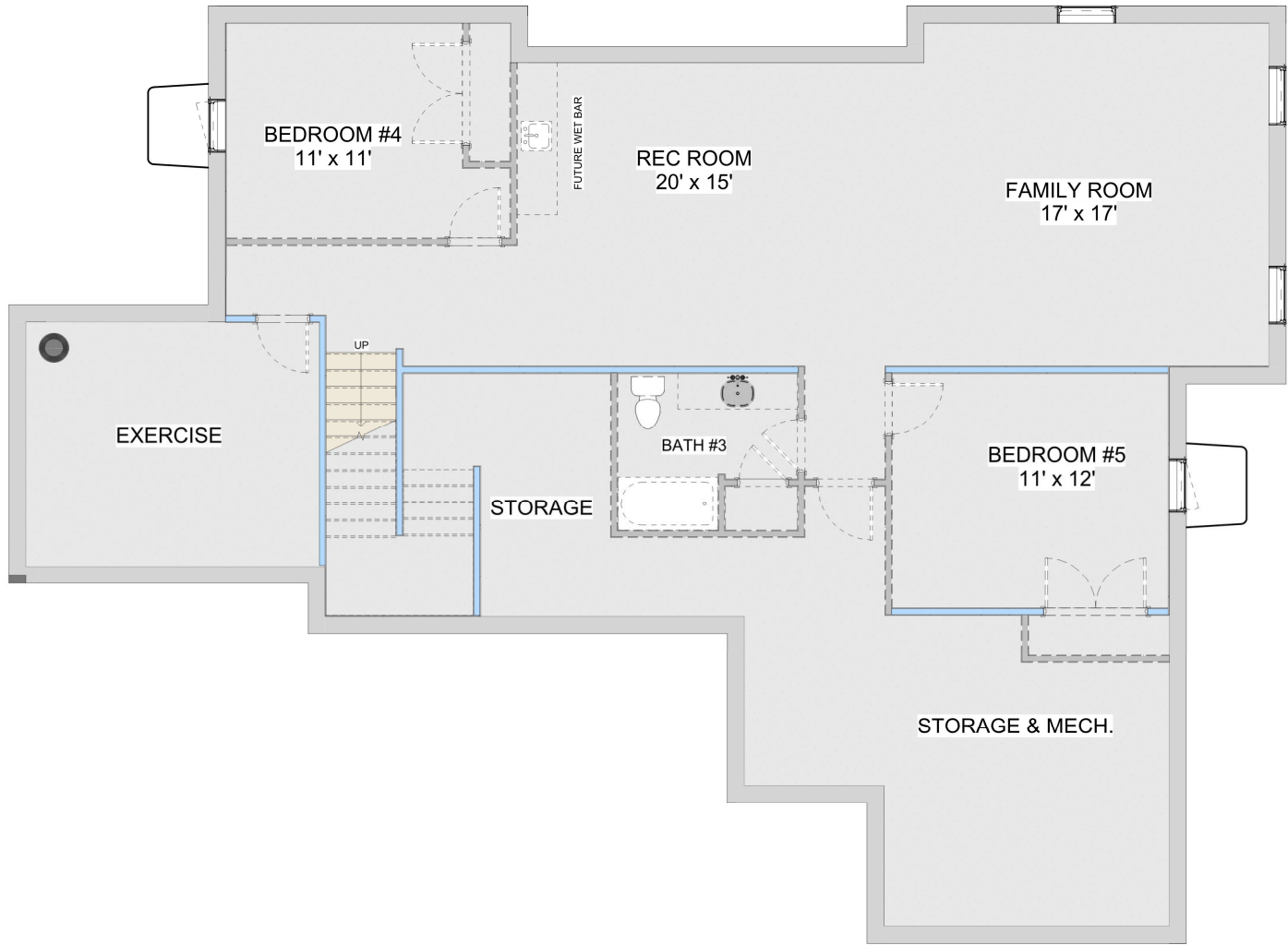
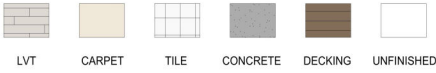


**PLAN DETAILS**

<b>Total living area</b>	<b>4072 sf</b>
1 <sup>st</sup> Floor	2036 sf
Basement	2036 sf
Garage	894 sf
Front Porch	181 sf
Bedrooms	3
Bathrooms	2
Width	64' 0"
Depth	56' 0"

# AMELIA BASEMENT PLAN



## UNFINISHED BASEMENT LAYOUT

*Pricing, specifications and terms may not be current and are subject to change without notice, Renderings are for illustrative purposes only and may show features/options not included in the price or available for an extra cost. Plan square footages and room dimensions may vary according to the elevation and plan selected. Contact R Henry Construction, Inc for more information.*