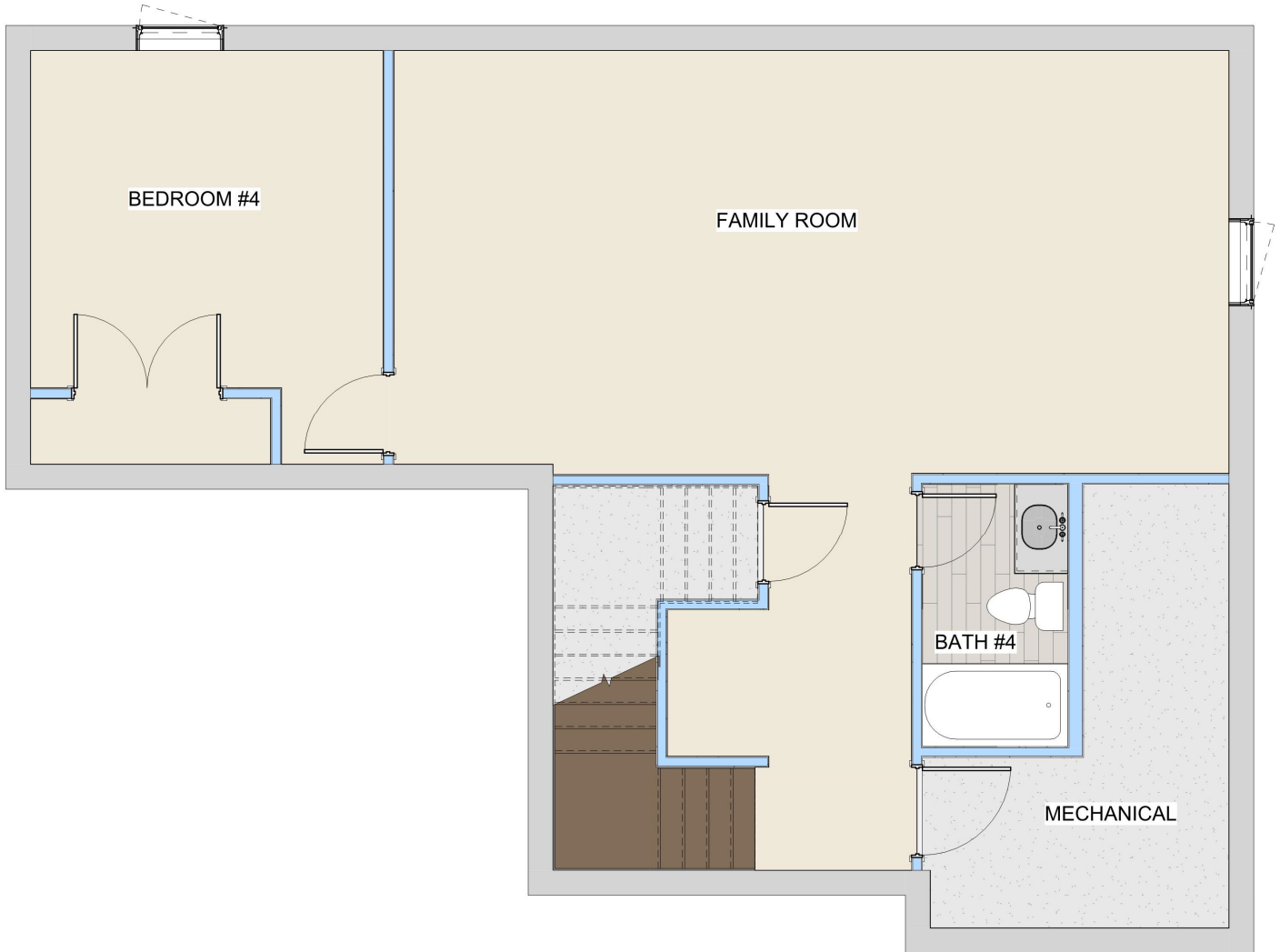


BEATRICE PLAN (3 STALL)

PLAN DETAILS	
Total living area	3456 sf
1 st Floor	1098 sf
2 ND Floor	1260 sf
Basement	1098 sf
Front Porch	77 sf
Garage	848 sf
Bedrooms	3+
Bathrooms	2.5
Width	61' 6"
Depth	41' 6"



UNFINISHED BASEMENT LAYOUT

Pricing, specifications and terms may not be current and are subject to change without notice, Renderings are for illustrative purposes only and may show features/options not included in the price or available for an extra cost. Plan square footages and room dimensions may vary according to the elevation and plan selected. Contact R Henry Construction, Inc for more information.